



TURKEY

SNS
INTERNATIONAL
TRANSPORT
&
FOREIGN TRADE LTD
www.sns-international.com

SNS SERVICES

- **Project Cargo & Heavy-Lift Equipment Handling**
- **Worldwide Chartering & Shipbroking**
- **Sea, land and air freight including heavy weight and over dimensional cargo with engineering liaison, as required**
- **LCL-FCL and LTL-FTL forwarding services**
- **Inland transportation**
- **Logistics solution**
- **Commodities inspection**
- **Packing**
- **Warehousing and buyer's consolidation**
- **Export & import customs clearing**
- **Export & import trading certification**
- **Customer broker services**
- **Visual inspection of packing & quantity verification**
- **Verification of cargoes against purchase orders**
- **Verification of packing list & invoices**
- **Inspection/verification of markings**
- **Hazardous Material Classification and labeling**

A large industrial ship, possibly a container ship or bulk carrier, is docked at a pier. The ship is dark-colored and has several cranes on its deck. In the background, there is a large, multi-story building with a grid-like facade. The scene is set during sunset or sunrise, with a warm orange glow on the horizon. The foreground is a flat, paved area with a few orange traffic cones.

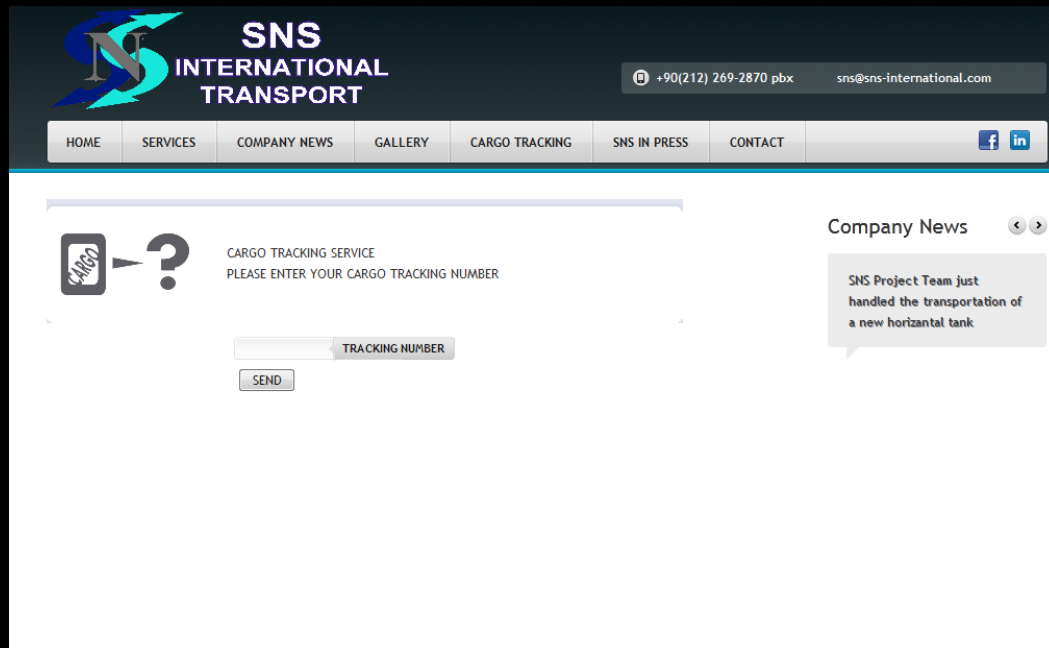
WORLDWIDE CHARTERING & SHIPBROKING

Direct Trucking Service From Europe to Middle East



CARGO TRACKING

SNS offers a sophisticated online cargo tracking system updated on hourly basis



The screenshot shows the SNS International Transport website. The header includes the company logo, name, contact information (+90(212) 269-2870 pbx and sns@sns-international.com), and a navigation menu with links for HOME, SERVICES, COMPANY NEWS, GALLERY, CARGO TRACKING, SNS IN PRESS, and CONTACT. Social media icons for Facebook and LinkedIn are also present. The main content area features a 'CARGO TRACKING SERVICE' section with a 'PLEASE ENTER YOUR CARGO TRACKING NUMBER' prompt, a text input field labeled 'TRACKING NUMBER', and a 'SEND' button. To the right, there is a 'Company News' section with a recent update: 'SNS Project Team just handled the transportation of a new horizontal tank'.

Cargo tracking through
www.sns-international.com

CIS & MID ASIA

Commonwealth of Independent States





Gas Desulfurization Plant Project

Cargo: 8 Amino Absorbers

Weight: 566 Tons / each

Dimensions: 46,41 m x 6,50 m x 7,50 m / each

SINO SINO

Record Shipment

South Korea – Turkey - Turkmenistan

Rafinery plant from Various units having diameters up to 3,25 meters



Hendek/TURKEY to Samara/RUSSIA

Diffusers 6.5 m X 5.85 m X 3.20 m



**La Seyne Sur Mer/France –
Ashgabat/Turkmenistan**

Gas Desulfurization Plant Project

Cargo: 8 Amino Absorbers Weight: 566 Tons / each

Dimensions: 46,41 m x 6,50 m x 7,50 m / each



South Korea – Turkey - Turkmenistan

Gas Desulfurization Plant Project

Cargo: 8 Regenerators Weight: 135 Tons / each

Dimensions: 36,92 m x 6,20 m x 6,50 m / each

SAMS



South Korea – Turkey - Turkmenistan

Turkmenistan Block 1 Project

Cargo: Hot Oil Heaters 92 Tons/Each



Malaysia - Turkmenistan

Turkmenistan Block 1 Project

Malaysia – Turkmenistan Cargo: Hot Oil Heaters

92 Tons/Each

SNS



Malaysia - Turkmenistan

US Embassy Construction Project Railway Transport



Poti / Georgia – Dushanbe / Tajikistan

MIDDLE EAST & GULF



Steel Rebars

Cargo: 8,000 tons of steel rebars



Canakkale/TURKEY - BAHRAIN

Asphalt Plant Transport

Cargo: Asphalt Plant units 1,450 FRT



Nemport / TURKEY – Dubai / UAE

Horizontal Tank Transport Measuring 26,3 m. length and 82 tons



Tuzla / TURKEY – Dammam / KSA

**Cargo: Windmill Parts measuring 40 m.
length and 80 tons per piece**



Windmill Farm Project Jordan

Transportation of 3 Transformers of 95 t/each and accessories



Kartal / TURKEY – Sulaymaniyah / IRAQ

Karan Service Utility Production Project

Cargo: Transformer 115 Tons



Turkey - Saudi Arabia

Horizontal Tank Transport 22 m X 5.2 m, 67 Tons



Derince / TURKEY to KSA

Transportation of Press Machine 110 Tons



Bucharest / ROMANIA – Bagdat / IRAQ

Karan Service Utility Production Project Transformer 215 tons / each



Turkey - Saudi Arabia

Transportation of Asphalt Breaker



Jeddah / KSA – Istanbul / TURKEY

Hammer Machine transportation



Dubai / UAE - Constanza / Romania

Horizontal Tank Transport

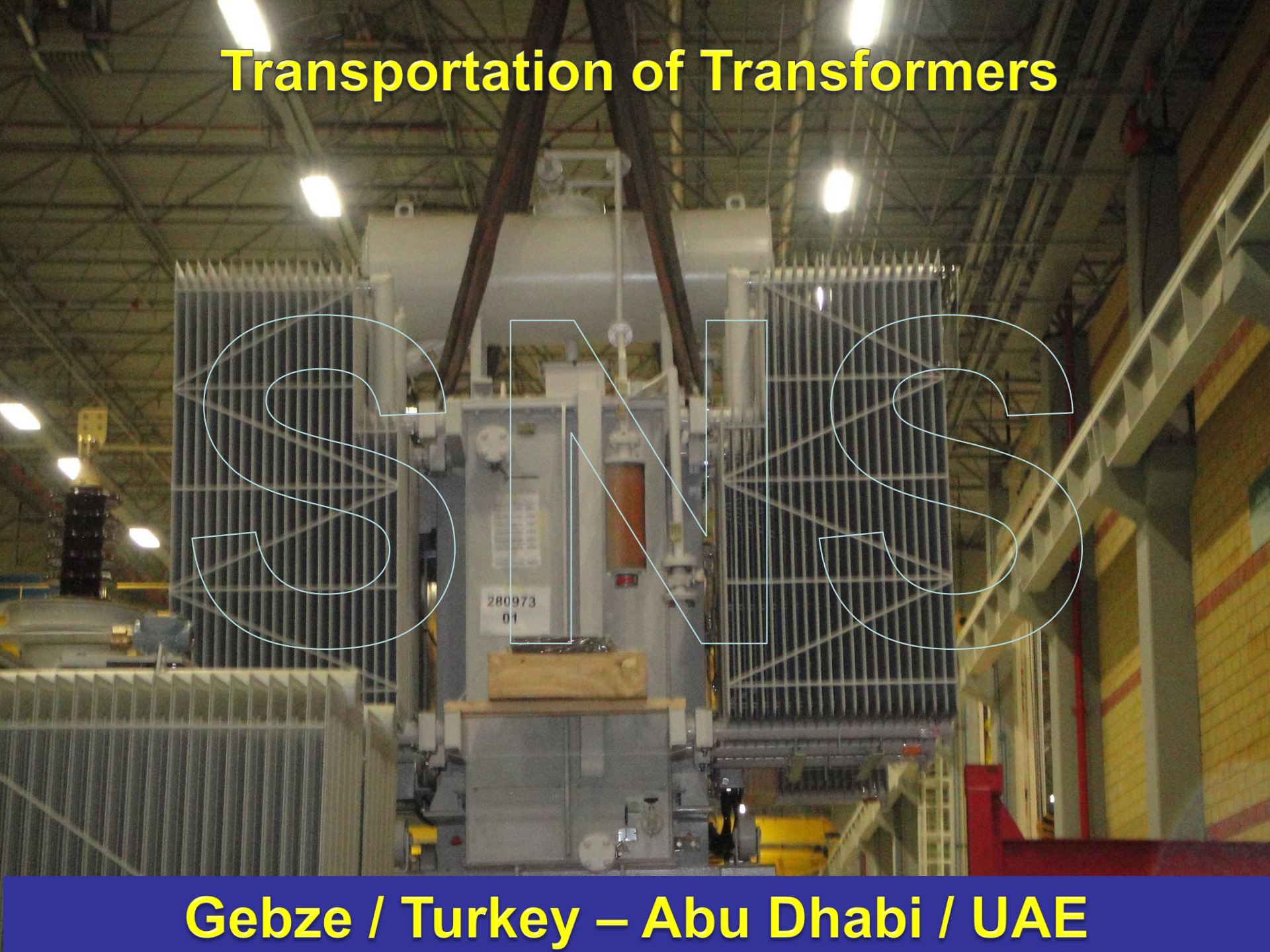
Cargo : 22 m X 5.2 m, 67 Tons



Tuzla – Derince / TURKEY to Ras Laffan / QATAR

Transportation of Transformers

SIMS

A large industrial transformer is shown in a factory setting. The transformer is a complex piece of machinery with a central core and two large cooling radiators on either side. The radiators are made of vertical metal bars. The transformer is mounted on a wooden crate. The background shows the factory floor with various pipes, beams, and lights. The word "SIMS" is overlaid in large, white, outline letters across the center of the image.

Gebze / Turkey – Abu Dhabi / UAE

Transportation of Oversized Equipment for Natural Gas Production, 92,5 Tons

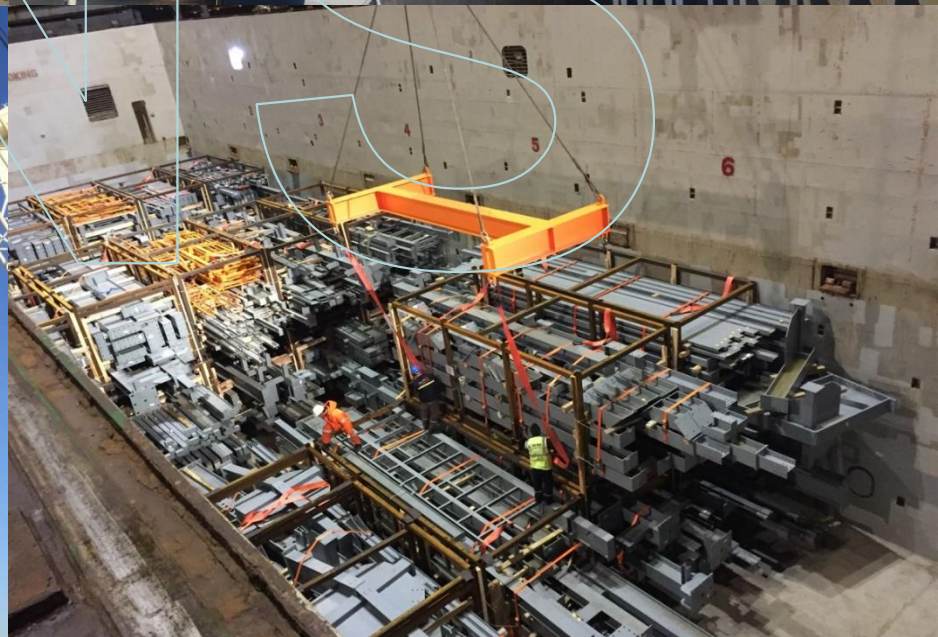
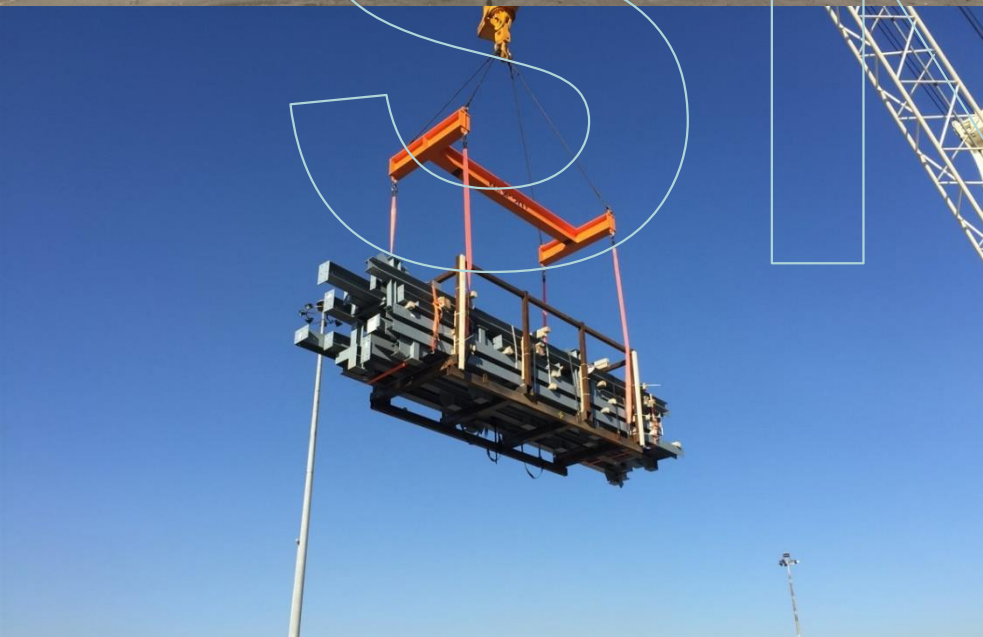


Gebze/TURKEY – Arbil/IRAQ

AFRICA



Steel Units Cargo: 8,756 FRT Packed Steel Units



Derince Safi Port/TURKEY to San Pedro Port/IVORY COAST

Full charter flight for 77 Packages, Total 80 tons First B 747 F landed on Mogadishu



Corlu/TURKEY – Mogadishu/SOMALIA

Gottwald Crane: 17 m length x 36 m height, 366 tons Machinery & Equipment: 1,300 tons total



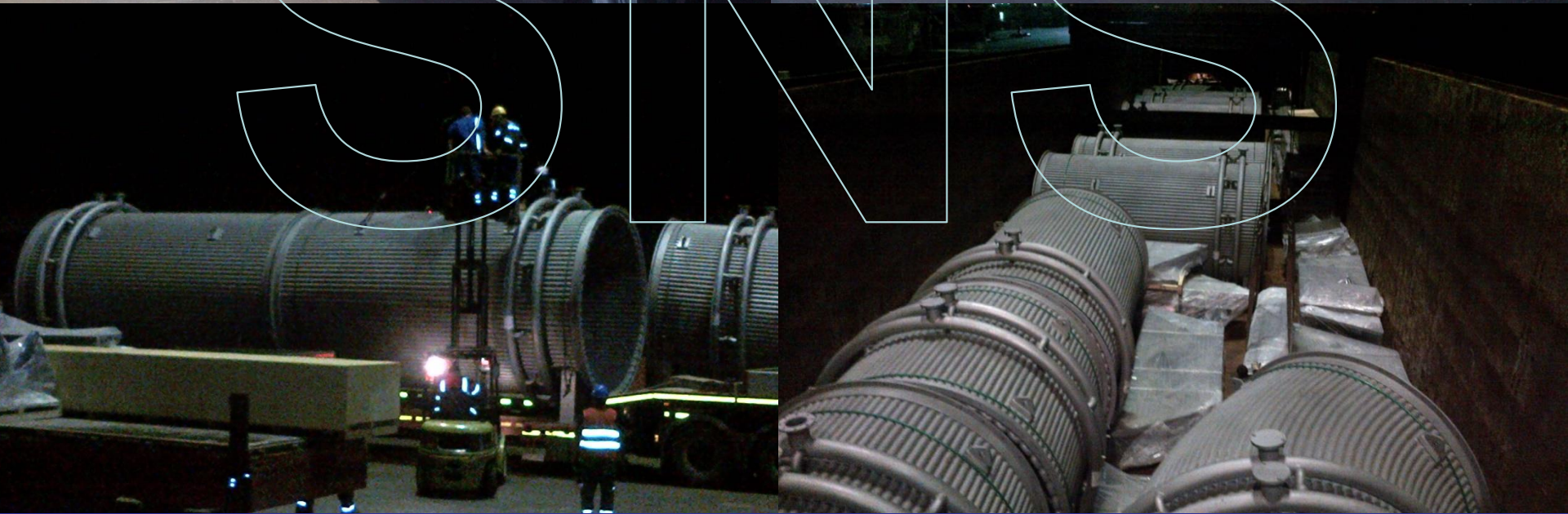
Trabzon-Derince/TURKEY to Mogadishu/SOMALIA

Project Cargo of 56 units Diameters up to 4,4 m



Nemport/TURKEY – Djen Djen/ALGERIA

**Project Cargo of 38 units
Diameters up to 4,4 m**



Nemport/TURKEY – Djen Djen/ALGERIA

Project Cargo of 331 units Diameters up to 5,4 m, lengths up to 20 m



Derince / TURKEY – Djen Djen / ALGERIA

Cargo: Oversized Mini Mill Components



Derince / Turkey – Alexandria / Egypt

Cargo: Wooden Case

4.85 m x 4.00 m x 4.20 m, 17,5 tons



Durban / SOUTH AFRICA – Kastamonu/TURKEY

Breakbulk Cargo: Various Equipment of 1,900 cbm



Mersin / Turkey to Mogadishu / Somalia

Transportation of Anti-Riot Vehicles 13 Tons/each



Mardas / TURKEY – Tripoli / LIBYA

Mobile Concrete Plant, Feeder Unit and Silo Transportation, 40 Tons

S N S



Ankara / TURKEY – Misurata / LIBYA

Road Construction Project in Algeria Cargo: Asphalt Plant and Accessories

SNS

A large blue and white striped cylindrical cargo is being hoisted by a crane on a ship's deck. The cargo is suspended by cables and is being moved from the ship. The background shows the ship's structure and a cloudy sky.

Derince/TURKEY – Skikda / ALGERIA

New Enfidha Airport Project



Tunisia

EUROPE



Semi Mobile Crusher Plant Project- 2

Units having lengths of 30 m, widths of 5,6 m, weights of 90 tons each



Izmir – Bremerhaven

Windmill Project - 1

Various windmill units



Izmir – Salerno / Italy

Windmill Project - 2 Izmir – Salerno/Italy



Various windmill units

Medium Bar Mill Upgrading Project 2

L: 5,35 m W: 3,83 m H: 4,04 m. Weight: 80,56 tons



Udine / ITALY to Orhangazi / Turkey

Medium Bar Mill Upgrading Project - 3

L: 14,25 m, W: 3,125 m, Weight of 30,5 tons each.



Germany – Orhangazi/Turkey

Steel Structures of Mertainen Plant for Crushing and Sorting of Ore, 188 packages, 6,500 frt Pieces up to 23 m length, 4,5 m height



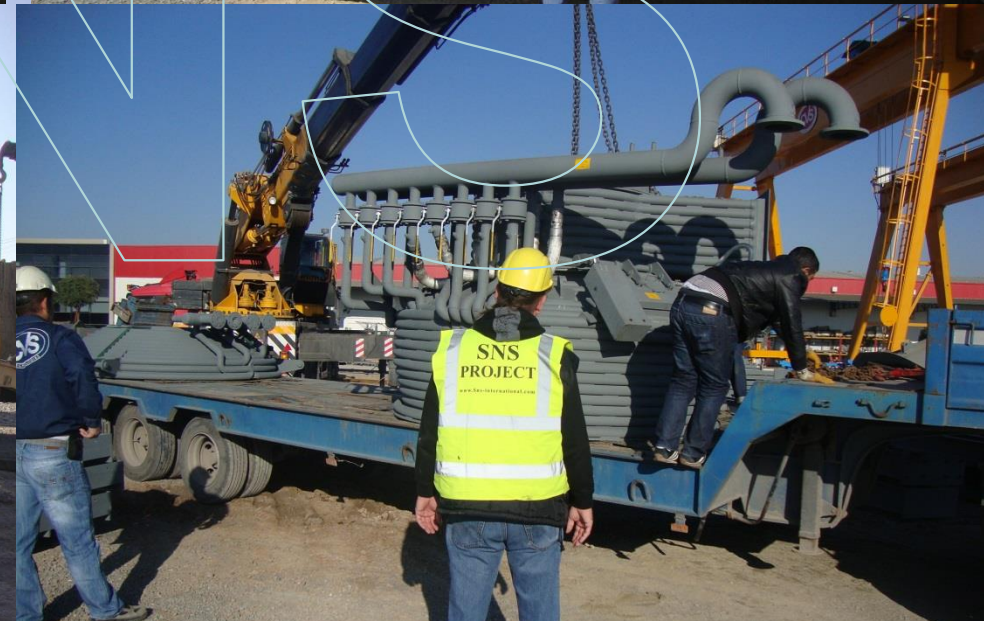
Bozoyuk-Ankara/TURKEY to Haraholmen/SWEDEN Part 1

Steel Structures of Mertainen Plant for Crushing and Sorting of Ore, 270 packages, 4,500 frt Pieces up to 23 m length, 4,5 m height



TURKEY to SWEDEN Part 2

Oversized pieces of Vacuum Tank



Breakbulk from Derince/Turkey to Bar/Montenegro

POSCO CCL Project Logistics



**Felixstowe/Bremerhaven/Antwerp-
Derince/Evyap / TURKEY**

Mobile Rotary Crusher Transportation

Weight: 47.5 Tons



Sofia / BULGARIA – Izmir / TURKEY

Tank Transportation

Cargo: Industrial Vertical Tanks



From Turkey to France, Switzerland, Portugal, Spain, Germany

Biodiesel Factory Project

Cargo: Diesel Engine 84 Tons



SINIS

Holland - Turkey

Shedder Machine Transportation

Weight : 61 tons



Bremerhaven (Germany) – Derince (Turkey)

FAR EAST



Cargo inspection & loading supervision

Evaporator, Crysalliser Product Dryers

Up to 19,6 m lentghs, 6,7 m widths, 6,8 m heights



Derince/TURKEY to Henderson/AUSTRALIA

Steel Equipment having dimensions up to 4,5 m width, 3,5 m height and a total of 1506 FRT



From China to Orhangazi/Turkey

Airfreight of Aqua Park Equipment

Cargo: 357 Pieces of Amusement Park



Turkey – South Korea

Antalya Airport Project Passenger Bridges CHINA - TURKEY



SNS INTERNATIONAL

AMERICAS



Semi Mobile Crusher Plant Project - 2

Cargo: 123 pieces – 1.000 tons



Aliaga/Turkey to Panama

Semi Mobile Crusher Plant Project

Cargo: 439 pieces - 970 tons



Ankara – Izmir – Derince to Panama

Mini mill units Cargo: 439 pieces - 970 tons



Nemport to Veracruz

Breakbulk Shipment of Steel Profiles 1,600 Tons



Iskenderun/TURKEY – Baranquilla/COLOMBIA

Aircraft Engine Movement by Air-freight 6,420 kg/each



Miami/USA – Sabiha Gokcen/TURKEY

Windmill Project Delivery

Windmill Towers, Nacelles, Hubs, Generators and Blades



Izmir-Canakkale/TURKEY

Cooling Tower Units

Cooling Tower Units W: 3.70 m H: 3.60 m.



Gebze - Istanbul

Bright Bar Production Line

Machine Body 60 tons, L: 4.2 m W: 2.8 m H: 3.855 m



Iskenderun - Hatay

Machine Components

Package of 48.4 tons, Width of 4.1 m Height of 3.35 m.



Iskenderun - Hatay

Dismantled 600 ton capacity Hydraulic Press Machine



Haydarpasa Port - Cayirova

Chemical Plant Project in Izmir



Cargo: Pieces up to 35 m length and 185 tons

Delivery and placement of OOG equipment to The Cutting Line Workshop of The Steel Factory



Evyap Port – Ali Kahya / TURKEY

POSCO STS Project Logistics



Derince/Evyap - Ali Kahya/TURKEY

Transportation of Refinery Tanks to TUPRAS 4,70 m diameter

SNS

iyat.com.tr
iyat.com.tr

SNS
PROJECT

İZMİT - TURKEY

Transportation of Oversized Equipment for Cement Factory

SNS

Izmit – Bursa /TURKEY

ROLL HAIR FACTORY CHIMNEY SHIPMENT

LENGTH : 28



Mersin – Ali Kahya/TURKEY

EGE CELIK PORT for the purpose of holding an inspection survey in order to ascertain the **CARGO** loaded to **SNS** handled the cargo inspection and port loading. Some units had lengths of 29.45 m. widths of 3.00 m. Gross kg 90,867



Ege Celik – İZMİR / TURKEY

SNS handled the cargo inspection and port loading operations



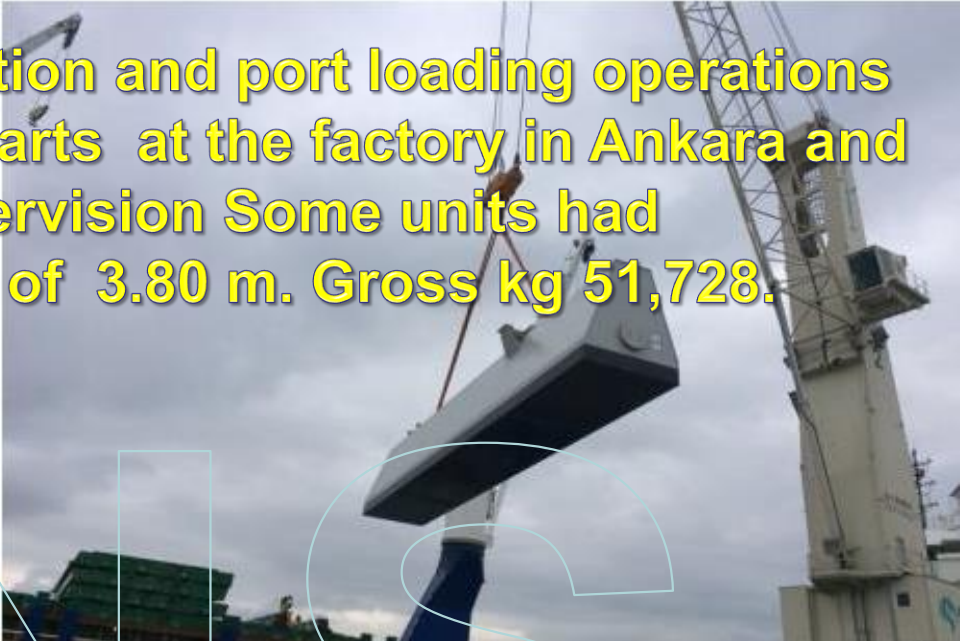
Ege Celik – İZMİR / TURKEY

SNS handled the cargo inspection and port loading operations of semi mobile crusher plant parts at the factory in Ankara and İzmir loading / supervision.



Ege Celik – İZMİR / TURKEY

SNS handled the cargo inspection and port loading operations of semi mobile crusher plant parts at the factory in Ankara and İstanbul loading / supervision Some units had lengths of 20.00 m. widths of 3.80 m. Gross kg 51,728.



SAFI PORT-DERINCE / TURKEY

SNS handled the cargo inspection and port loading operations



EVYAP PORT -YARIMCA / TURKEY

We , as SNS international engaged all the transport operation from factories in Ankara and İzmir to Ege celik port which included survey and loading on deck



Ege Celik – İZMİR / TURKEY

SNS handled the cargo inspection and port loading operations



SAFI PORT-DERINCE / TURKEY

SNS handled the cargo inspection and port loading operations 10 sets of wind rose project



Ege Celik – İZMİR / TURKEY

BBC GEORGIA SNS inspection and port loading operations



Ege Celik – İZMİR / TURKEY

STADIUM PROJECT

SNS inspection and Factory loading operations

L : 26.00 m * W : 4,35 m * H : 4,60 m



ADAPAZARI HENDEK / BULGARIA BURGAS

İZMİR KEMALPAŞA / İZMİR ALSANCAK PORT SEA PROJECT

SNS inspection, Factory loading operations
15.00cm * W : 4,50cm * H : 3,60cm



KEMALPAŞA – İZMİR ALSANCAK PORT / TURKEY

ANKARA / İZMİR ALSANCAK PORT SEA PROJECT SNS inspection, Factory loading operations



ANKARA – İZMİR ALSANCAK PORT / TURKEY

EREĞLİ ZONGULDAK / FRANCE

Road Transport

SNS Inspection, Factory loading operations

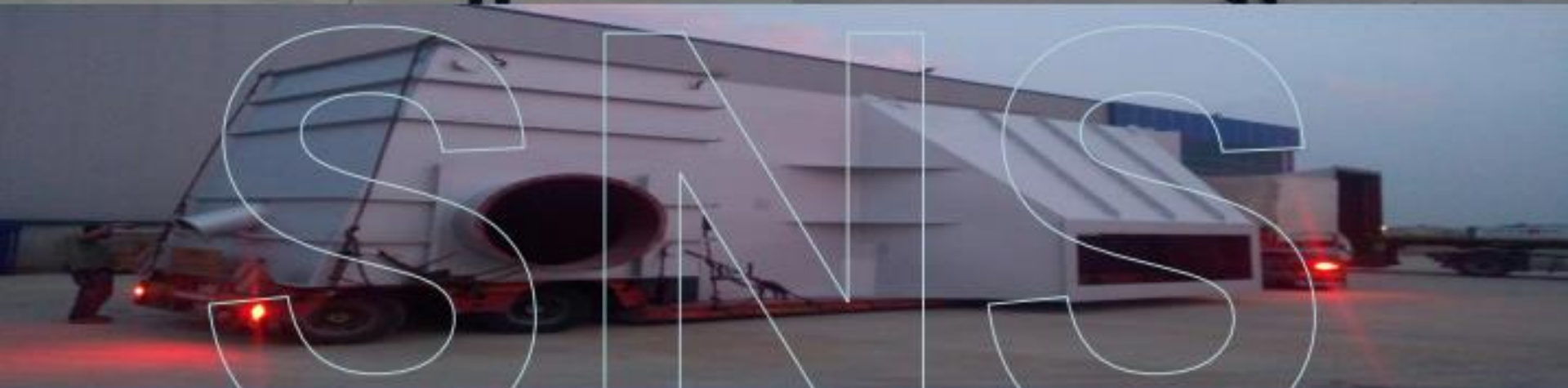


ZONGULDAK EREĞLİ / TURKEY – FRANCE

ANKARA / İZMİT DERİNCE PORT

Road Transport

SNS inspection, Factory loading operations



ANKARA – İZMİT DERİNCE PORT / TURKEY

ANKARA / İZMİR EGE ÇELİK PORT SEA PROJECT SNS inspection, Factory loading operations



ANKARA – İZMİR EGE ÇELİK PORT / TURKEY

As the SNS family, we have safely loaded 2
Transformers, 75 Tons



DİLOVASI – GEBZE İSTANBUL / TURKEY

Bakery facility Project , SPAIN shipment



MALKARA – EDİRNE İSTANBUL / TURKEY

CONSTRUCTION EQUIPMENTS PROJECT SHIP DISCHARGE Bakery facility Project , SPAIN shipment



AL HAMRIYA PORT – DUBAI

IRON FACTORY EQUIPMENT SHIPMENT

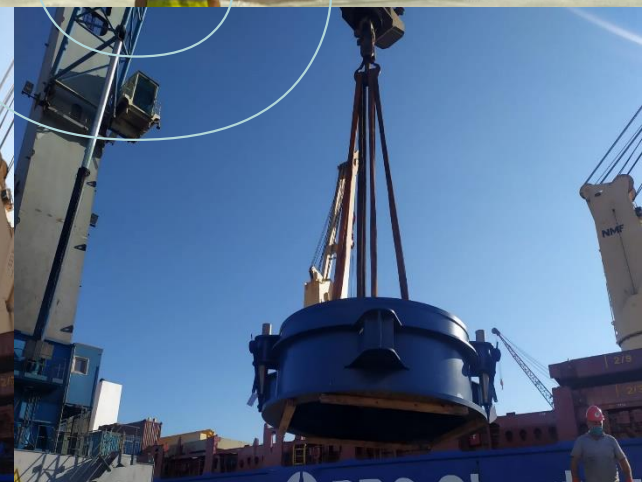


KEMALPASA – IZMIR / TURKEY

CHILE PROJECT IRON FACTORY EQUIPMENT SHIPMENT

22,22 m X 5,96 m X 5,20 m / 80.000 KGS

18,50 m X 5,40 m X 5,20 m / 45.000 KGS



ANKARA – MERSİN / TURKEY

NOZZLE ASSEMBLY LOADING FROM EQUIPMENT SHIPMENT

10,50 m X 5,30 m X 4,50 m / 58.000 KGS



GDYNIA (POLAND) – YALOVA / TURKEY

IRON FACTORY EQUIPMENT SHIPMENT 10,50 m X 5,30 m X 4,50 m / 58.000 KGS



TUZLA – POLDAVA / TURKEY

WINDMILL PROJECT

28,00 m X 3,96 m X 3,96 m / 32.000 KGS



NEMPORT İZMİR - SOUTHAMPTON

TRANSFORMER PROJECT

5,44 m X 3,43 m X 3,50 m / 20.000 KGS



AUTOPORT İZMİT - FREMANTLE

STEEL PIPE PROJECT

27,00 m X 1,73 m X 1,73 m / 32.000 KGS

27,00 m X 1,73 m X 1,73 m / 32.000 KGS



SANKO PORT ADANA - TURKEY

METERING SWITCHGEAR 36KV

3,50 m X 2,30 m X 2,90 m



DP WORLD PORT İZMİT - TURKEY

WASTE HEAT RECOVERY PROJECT

12,40 m X 3,60 m X 3,60 m / 45.000 KGS



VOERDE - MALATYA - TURKEY

STEEL CASTING PROJECT

6,40 m X 6,40 m X 2,60 m / 74.000 KGS

5,41 m X 5,41 m X 1,70 m / 52.800 KGS



AUTOPORT İZMİT - TURKEY

LOWER SHELL ASSEMBLY PROJECT

9,36 m X 7,10 m X 3,15 m / 35.199 KGS

8,45 m X 5,60 m X 4,25 m / 38.163 KGS



SAFIPORT İZMİT - TURKEY

RORO SHIP DISCHARGE PROJECT

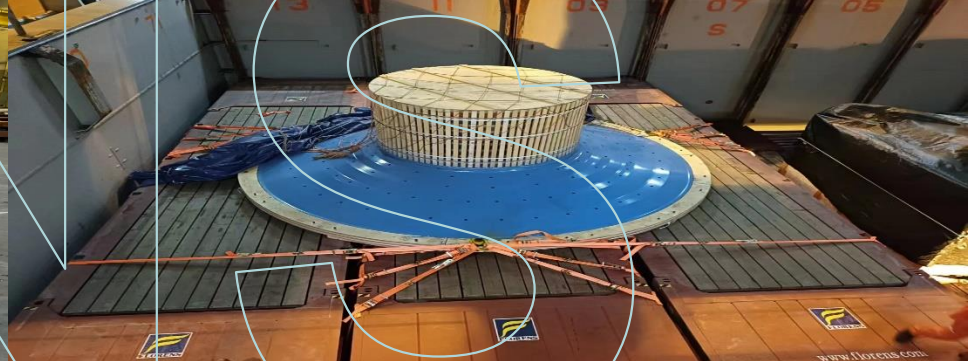
46,00 m X 12,00 m X 4,59 m / 210 000 KGS



CEYPORT TASUCU MERSIN - TURKEY

CHINA-TEMPE,USA / TEMPE,AZ USA

5,50 m X 5,50 m X 2,22 m / 40.500 KGS



TEMPE, AZ - USA

MODULER TYPE BRIDGE EXPANSION JOINT PROJECT

15,50 m X 1,70 m X 0,70 m / 10.500 KGS



SAFIPORT DERINCE IZMIT - TURKEY

PLATFORM TANK EXPANSION JOINT PROJECT

23,15 m X 5,80 m X 4,79 m / 28.000 KGS



SAFIPORT DERINCE IZMIT - TURKEY

**ASSURING YOU OF OUR
BEST COOPERATION
AT ALL TIMES,**

FREIGHTFULLY YOURS...

sns@sns-international.com

www.sns-international.com